

# Installation

## Recommended Attachment

### ► Asphalt

A non-styrene epoxy chemical resin comprised of two components and a 12mm threaded rod with a length no greater than the thickness of the asphalt.

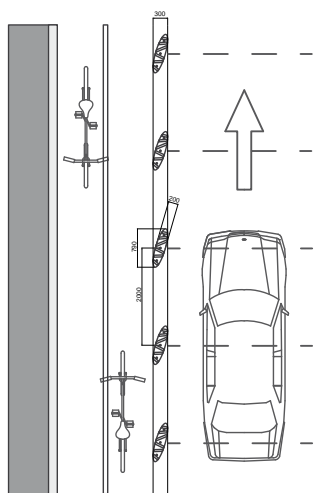
### ► Concrete

Option A: Metallic attachment, 8.8 Double Expansion 14x140 or 12x120mm.

Option B: A non-styrene epoxy chemical resin comprised of two components and a 12mm threaded rod with a length of 12 or 14 cm.

## Installation

1. Place the piece on the ground and clearly mark the position of the 3 holes.
2. Drill the 3 holes with a SDS Plus 16x150mm drill bit. Clean thoroughly.
3. Apply the resin with the product's mixer cannula (place the first piece down and make sure that the resin introduced into the hole is mixed correctly).
4. Attach the piece by firstly screwing the middle screw; keep going until all 3 screws are well tightened.
5. Attach the protective closing lids.



## Customization of the reflecting strips



## Position (relative to the road)



Parallel to the curve



Oblique



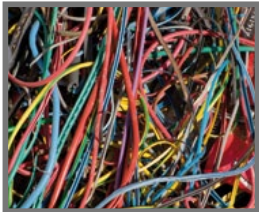
Parallel

# Zebra

www.zicla.com | info@zicla.com  
Tel. +34 93 224 27 31  
Fax. +34 93 221 70 60  
C/ Ramon Turró 100-104, 4<sup>a</sup>-3<sup>a</sup>  
08005, Barcelona

# zicla

# Material



## Recycled plastic

100% recycled PVC

**Origin:**  
Electric cable plastic covering, blinds, pipes...

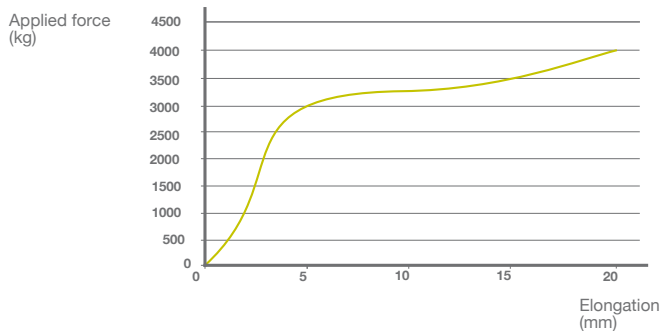
# Test

## On the material

| Properties                    | Unit      | Regulation  | Value               |
|-------------------------------|-----------|-------------|---------------------|
| Hardness                      | ShA       | DIN 53505   | 45-95               |
| Tensile modulus of elasticity | MPa       | DIN 53457   | 3-15                |
| Elongation at break           | %         | DIN 53457   | 400-570             |
| Tear Strength                 | kN/m      | DIN 53515   | 38-96               |
| Abrasion loss                 | Excellent |             |                     |
| Lightfastness                 | Good      |             |                     |
| Resistance to acids           | Good      |             |                     |
| Resistance to bases           | Good      |             |                     |
| Reaction to fire              |           | Euroclasses | B <sub>FL</sub> -s1 |

## On the main part

### Compressive strength



## Pictures



# Zebra

[www.zicla.com](http://www.zicla.com) | [info@zicla.com](mailto:info@zicla.com)  
Tel. +34 93 224 27 31  
Fax. +34 93 221 70 60  
C/ Ramon Turró 100-104, 4<sup>a</sup>-3<sup>a</sup>  
08005, Barcelona

**zicla**





# Zebra

www.zicla.com | info@zicla.com  
Tel. +34 93 224 27 31  
Fax. +34 93 221 70 60  
C/ Ramon Turró 100-104, 4<sup>a</sup>-3<sup>a</sup>  
08005, Barcelona

**zicla**



---

**Zebra**

[www.zicla.com](http://www.zicla.com) | [info@zicla.com](mailto:info@zicla.com)  
Tel. +34 93 224 27 31  
Fax. +34 93 221 70 60  
C/ Ramon Turró 100-104, 4º-3ª  
08005, Barcelona

**zicla**



Agpac Ltd.  
PO Box 4575  
Christchurch Mail Centre  
Christchurch 8140  
New Zealand

Chris Hartshorne

Phone: +64 3 338 2400  
Fax: +64 3 338 8295  
[chartshorne@agpac.co.nz](mailto:chartshorne@agpac.co.nz)